

Site Code	
Name & Address	MES525 Foxholes Brow, Bowl barrow
Parish, District	Eastbourne, East Sussex
OS Grid Refs	Centred TQ 5789 0078 old                      TQ 5798 0072 new
NMR	TQ 50 SE24
Geology	Chalk
Project No.	FB52501
Type of Survey	Magnetometry
Type of Site	Bowl Barrow
Dates of Fieldwork	Friday 07/07/17
Client	ENHAS
Project Manager	Bob Williams
Assistance	Sue Williams, Buffy Bennett
Period Summary	Bronze Age – 2350BC to 701 BC
Summary	Bowl Barrow, 9 yards diameter, ¾" high.

## **A Geophysics Survey at Foxholes Brow, Eastbourne**

### Introduction

On Friday 07/07/17 a group of ENHAS members carried out a Magnetometry Survey to discover whether a supposed ploughed out Bowl Barrow was still detectable. The site known as MES525, lies in Foxholes Brow in an area containing other prehistoric barrows. It is described in the East Sussex HER as being 9 yards in diameter, ¾inch high and entirely ploughed out.

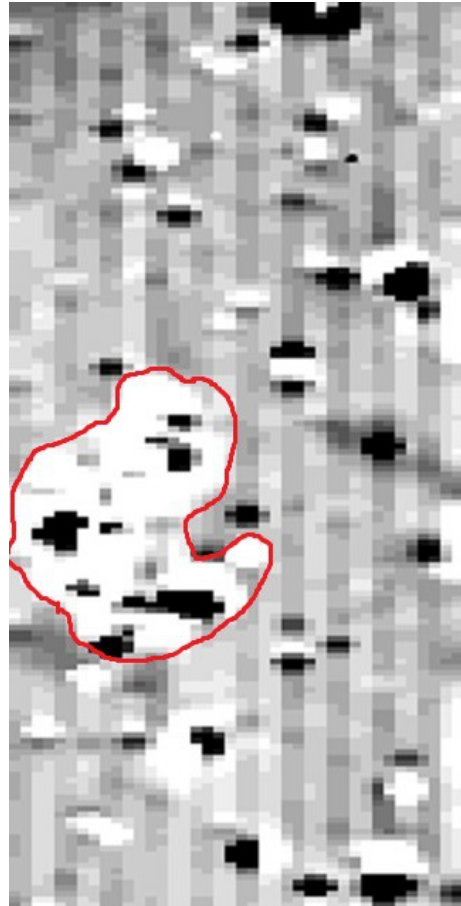
### Methodology

The survey was carried out using a Bartington Grad 601-1 Fluxgate Gradiometer. The grid was made up of two 20x20m squares orientated on a NW alignment. Readings were logged at intervals of 0.25m along each traverse in a zig-zag fashion. Data was processed using Snuffler software.

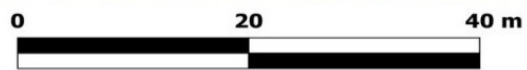
Results



Processed Data.



Interpretation



Interpretation results over OS map.

## Conclusion

The results appear to show the remains of a barrow which has been badly damaged. Although it has been reported as being ploughed out the indications are that it has been heavily dug. This may be due to the barrow being plundered in the past. Indications of a excavation trench may be detectable on the east side.



The HER record actually shows MES525 at TQ 5789 0078, but this barrow is at TQ 5798 0072. It is however approx 9 yards across as described in the description. Further investigations in the area may be required to establish whether this is in fact MES525 or as yet an undiscovered barrow.